

Sensors



[Accelerometer](#)



[Analog gauge](#)



[Bin level monitor](#)



[Circular Chart Recorder](#)



[Digital indicator](#)



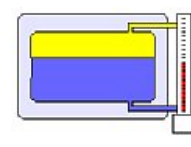
[Digital pressure controller](#)



[Dissolved oxygen meter](#)



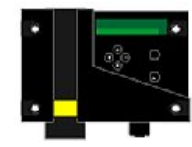
[Fiber-optic temperature sensor](#)



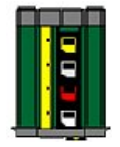
[Fluid sensor](#)



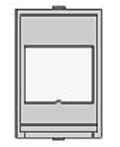
[Gas detector 1](#)



[Gas detector 2](#)



[Gas monitor](#)



[Generic transmitter](#)



[Hand-held meter](#)



[Humidity sensor](#)



[Infrared CO2 analyzer](#)



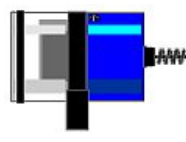
[Level switch](#)



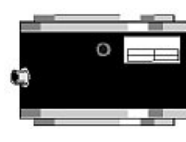
[Level transmitter 1](#)



[Level transmitter 2](#)



[Linescan camera](#)



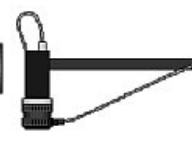
[Load cell](#)



[Machine vision camera 1](#)



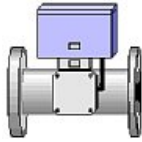
[Machine vision camera 2](#)



[Machine vision camera on boom](#)



[Microwave level sensor](#)



[Microwave sludge density meter](#)



[Noncontact thermometer](#)



[Oxygen transmitter](#)



[Pressure gauge](#)



[Pressure transmitter](#)



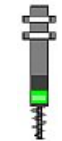
[Radar level transmitter](#)



[RF capacitance level meter](#)



[RTD with industrial weatherproof aluminum head](#)



[Sensor 1](#)



[Sensor 2](#)



[Sensor 3](#)



[Sensor 4](#)



[Sensor 5](#)



[Sensor 6](#)



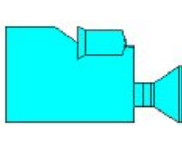
[Sensor 7](#)



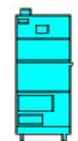
[Sensor 8](#)



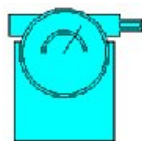
[Sensor 9](#)



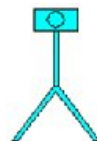
[Simple camera](#)



[Simple chromatograph](#)



[Simple transmitter](#)



[Simple vision system](#)



[Smart gas chromatograph](#)



[Solar thermometer](#)



[Strip Chart Recorder](#)



[Tank gauge](#)



[Tank meter](#)



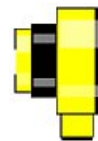
[Tank radar transmitter](#)



[Temperature transmitter 1](#)



[Temperature transmitter 2](#)



[Ultrasonic proximity sensor](#)